

Ozi Explorer CE Features

[OziCE Home](#) | [Getting Started](#) | [Using Maps in CE](#) | [GPS FAQ](#) | [PDA FAQ](#) | [Features](#) | [Screen Shots](#) | [Support](#) |

OziExplorerCE is moving map (real time tracking) software for PocketPC and Window CE PDA's, it uses raster map images which are either scanned or purchased in digital format. It allows you to track your position received from a GPS on a map.

Features ([View more screenshots](#)) [Click here to view a YouTube video of OziExplorerCE in use.](#)

● Moving map navigation using any GPS providing NMEA output in one of the supported sentences.

OziExplorerCE will allow you to create your own routes on the map and navigate along those routes.

The design philosophy is you plan your trip using the full PC OziExplorer on you PC and then transfer your waypoints and other data to your PDA for use by OziExplorerCE.

Maps

Works with maps world wide, obtain digital maps for your region of interest in one of the many supported image formats or if you scan your own, you can use PC OziExplorer to calibrate them for use in OziExplorerCE.

OziExplorerCE uses a special image format which provides faster loading and better zooms, an image conversion utility is provided with OziExplorerCE. Maps in *ECW format* can also be used without conversion.

Maps in *BSB4*, *BSB5* and *Kompass* format can be converted for use in OziExplorerCE.

GPS

For real time navigation almost any GPS receiver with NMEA 0183 output (most output the required GPRMC or GGA or GLL sentence). These include built-in GPS or an external GPS connected to the CE Device serial port, a compact flash GPS plugged into a compact flash slot, a SDIO GPS, a Bluetooth GPS or a Navman GPS sleeve (for iPags).

Waypoints and Tracks

Sets of waypoints (up to 10,000 waypoints) can be loaded from waypoint files (also supports .ov2, .loc and .gpx formats). Waypoints and tracks can be automatically logged to file storage.

Configurable Options -Multi Screen Support - Page through the screens on your PDA / PND

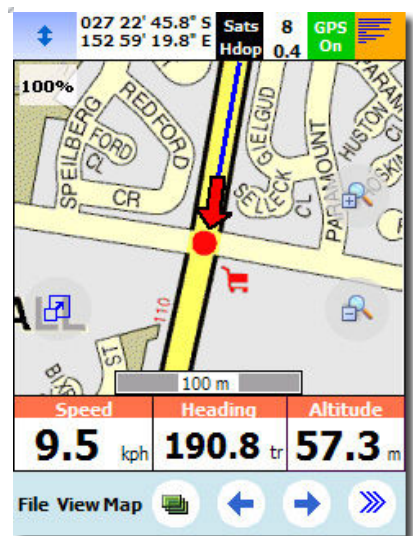
Using our "Screen Designer" software on your PC, design your own screens (up to 20 screens) with the parameters you want. Select from a list of more than 100 parameters and buttons.

[Click here to see the comprehensive list of more than 100 parameters and buttons which can be added to screens.](#)

Screen designs to suit many applications, moving map, navigation, geocaching, satellite, compass, altitude and track profiles etc.

[These comprehensive configuration options allow you to set up OziExplorerCE to work and feel the way you like it.](#)

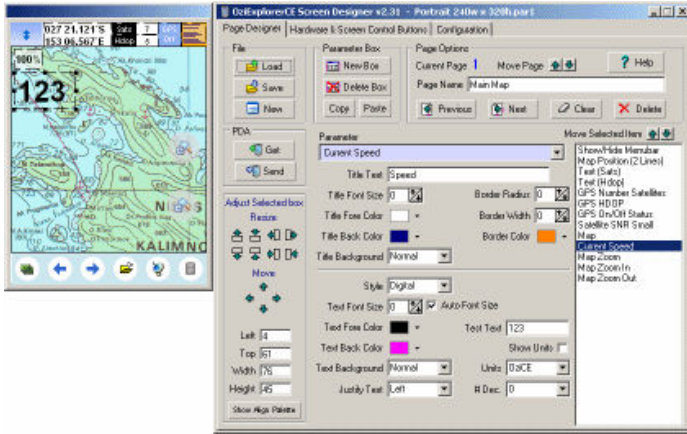
Screen Designer for OziExplorerCE



Loads of information can be displayed on-screen; use the standard screens or design your own.

By pressing screen buttons, the on screen information can be hidden to display the map full screen, this allows you to see more of your map.

Configuration options allow you to set your own track tail color and width, also you can select from various position icons and set the size and color.



Ability to program the hardware buttons (Pocket PC's only).

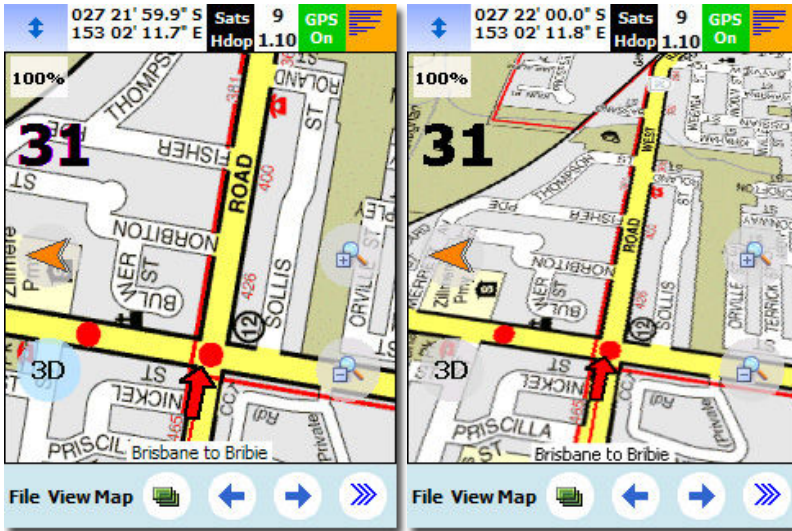
Support for PDA's with high resolution VGA displays.

The *log book feature* is fully configurable to automatically make log book entries when the configured conditions are met.

● **3D Perspective or standard view at the click of a button.**

3D Perspective view rotates the top of the map down using a true perspective view and provides for more map view ahead when tracking the GPS position.

Here is a brief explanation of some aspects the PDA screen shown on the left.



Standard View

3D Perspective View

	click the button to hide the bottom toolbar and show more of the map.
	shows the GPS status (On/Off) and background green shows a fix has been obtained.
	a small graphic representation of the satellite signal strengths.
31	the current speed in the units you choose (kph, knots etc).
	the north arrow points to North. Particularly useful in "course up" mode where the map is rotated to the direction of travel.
3D	click the 3D button to toggle on / off 3D Mode to show more look ahead.
	click to change to the next page (up to 20 pages which can contain the map, parameters and buttons) See more screenshots here

Also see the On Screen Display of Parameters section below.

● **Automatic loading of the next map and check for more detailed map at a set interval.**

A new map will be searched for when you leave the current map. The most detailed map will be selected. If activated in configuration a more detailed map will be searched for at a user defined interval even if you are still on the current map.

● **Automatic Route prompting (voice and symbol).**

This is not auto-routing, you must define the route manually using the Route Create toolbar.

- With auto-prompting, OziExplorerCE will automatically tell you to turn right and left and so on as each route waypoint is approached.
- OziExplorerCE works out the turn angle and direction itself and selects the appropriate symbol (**.bmp**) and sound file to play (**.wav**).
- The symbol is automatically displayed (when in "Land" mode) and the wav file is automatically played.
- The distance from the approaching route waypoint (when in "Land" mode) or the Course to Steer to the next waypoint (when in "Marine" or "Air" mode) is also played using voice prompts.

● **Types of Map Objects recognised by OziExplorerCE**

Waypoints, Routes and Tracks can be created directly on the screen using the stylus. Map Comments and Map Features which have been created in PC OziExplorer and saved with the map can be displayed.

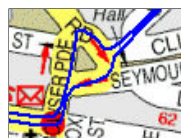
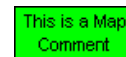
Waypoints



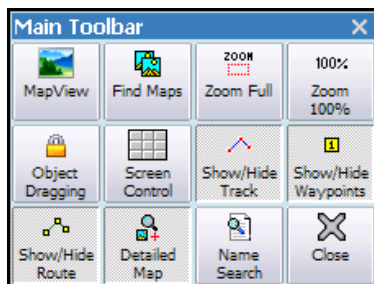
Routes



Tracks

Map
CommentsMap
Features

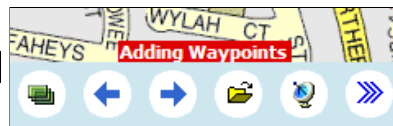
● Various Toolbars for easy operation



Several toolbars are available to be turned on to assist to make operations easy for the user. There is a main toolbar with many frequently used functions, as well as specific toolbars for Waypoints, Tracks, Route Create and Route Navigation. The toolbars can be easily hidden by pressing on the X button on the toolbar.



The Route Create toolbar.



Screen prompts are shown where necessary during toolbar operations.

● Create a Route on screen.

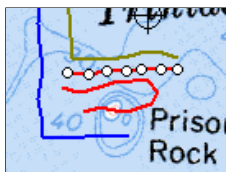
Plan your desired path and use a special route create toolbar to easily create a route by adding, inserting or removing route waypoints, edit properties. Simply activate the add button on the toolbar and click on the map at the desired positions to add a route waypoint. You can also move a route waypoint forward or backwards in the route. Waypoints can be dragged on the map using the stylus.

During navigation, voice and symbol prompts are activated. If you give a waypoints a silent property, no prompts are activated when approaching it, useful for setting up turn angles but the silent waypoint is not used for navigation.

Routes can be saved to files and reloaded.

● Tracks can be created on the map using the stylus - 5 user tracks can be created or loaded from a file

Up to 5 Tracks can be created in OziExplorerCE or tracks from the full PC OziExplorer can be loaded. Tracks created in OziExplorerCE can be loaded by PC OziExplorer. Each track has its own properties of color and track width in pixels.



Points on the Active track are shown with white dots

- The Track Toolbar is used to easily create user tracks, any of the five tracks can be made active and can be easily manipulated on the screen.
- All tracks can be modified and saved, track points can be added or inserted by clicking at the map position when either the add or insert Track Toolbar button is activated.
- Track points can be dragged to a new position on the screen.
- Press on an active track point to display the coordinates of the track point position.
- A popup menu can be activated by a simple press and hold on an active track point for 1 second. The menu has options such as Create Waypoint at track point and split / join track section.
- A Track List shows information about each track of the 5 tracks including total track distance.

● Logging of Track points to file and display of track on screen

When in moving map mode (real time tracking), Track Logging can be turned on so the track can be automatically logged to a file and can be configured for a new file to be created at intervals such as daily, weekly etc. The recent track history is also displayed on the map as a track tail (up to 1000 points are kept in memory).

- Use the track tail to view the recent track history.
- The track tail can be saved to a file for permanent storage.
- Ability to split the track logging daily, weekly, monthly or continuous to one file.
- Saved files can be reloaded into one of 5 available tracks and displayed on the map.
- Tracks created in OziExplorer for PC's can be loaded into OziExplorerCE.

● Replay of stored tracks

OziExplorerCE has a "Replay Track" option. For example if you have saved one of the tracks collected during a trip, you can load the track and replay (travel) along the track. The track will be replayed using the same configuration settings used for normal moving map operations.

The CE track replay option can also be used track files produced by PC OziExplorer.

● Load and display Waypoints on the map or create a Waypoint at current position or any other position using the stylus.

There are several ways to display waypoints on a map.

- Load waypoints from a saved file
- Using the Waypoint toolbar, add waypoints by tapping on the map with the stylus at any position
- Load waypoint files saved by PC OziExplorer
- A "Screen Control" feature can be used to quickly add a waypoint at the current position, just press on the centre of the screen.

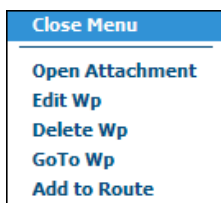
Other features of waypoints -

- The name and description of a waypoint can be edited. To view information about a waypoint, press and hold on the waypoint, the waypoint name, date and time and latitude and longitude will pop up on the screen.
- Waypoint names can be displayed adjacent to the waypoint.
- Waypoint can be dragged to a new position using the "drag" feature.
- Waypoint files created by OziExplorerCE can be loaded by PC OziExplorer.
- Press and hold on a waypoint for a popup menu to Edit, Delete, GoTo (turn on navigation to the waypoint) or add the waypoint to a route.
- Auto logging option can be activated so any waypoints added can be automatically logged (saved) to a file.

● Drag Map Objects to new position

Waypoints, route waypoints and active track points can be moved to a new position when the Drag Objects button on the main toolbar is active (pressed). Simply press on the object with the stylus and drag it to the new position.

● Hold stylus on Map Objects to get information about them or to get a popup menu of options



Waypoint
Popup Menu

Popup Information - Press and hold the stylus on the map or any map object (waypoint, route waypoint or active track point) until a red circle appears (approximately 0.5 seconds), release the stylus to show a window with information about the map or map object.

Popup Menu - Press and hold the stylus on the map or any map object (waypoint, route waypoint or active track point) for at least 1 second to show a popup menu with several menu options. The map popup menu has zoom selections, Full Map or 100% Zoom. Map Object popup menus are different for each object type.

● Many Map Zoom levels



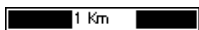
Zoom buttons can be added to any screen, the map can be zoomed by clicking on the magnifying glass buttons or selecting a zoom option on the view menu. Zoom up and down can also be added to the PDA buttons on a Pocket PC. Configure the zoom levels above 40% that you require in Configuration. Zoom levels below 40% are always available.

The zoom full option will select a zoom level so the complete map just roughly fills the screen.

A 100% zoom level is also available so you can quickly return to normal zoom.

● Scale on Map

Display a scale on the map, the scale automatically adjusts when the map is zoomed in or out.



● Various Position display formats

Selectable position display formats such as Degrees and Minutes, Degrees Minutes Seconds, and grids such as UTM, BNG and many more. Current position is shown in the selected format.

● On screen display of parameters

Standard screens are provided or select from more than 100 parameters such as Speed, Heading, Altitude and many more. Use the screen designer to change the "look and feel" of the screens by selecting the parameters to display and also many additional properties such as font size, color, transparent, translucent etc.

For example, during moving map operation the speed, bearing and altitude can be displayed. Using the screen designer, parameters can be added or removed from the screen or additional screens can be designed.

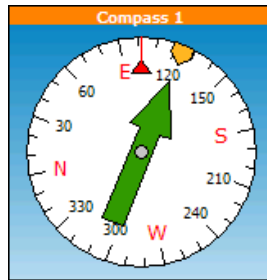
Parameters can also be added / removed from screens.

[Select from a list of more than 100 parameters and buttons.](#)

Speed	Heading	Altitude
9.5 kph	190.8 tr	57.3 m

Speed	VMG	Dist Next	Heading	CTS	Cross Trk
0.3 kph	0.3 kph	1.14 km	101.8 tr	124.0 tr	3.09 Lm

Altitude 32.6 m	Avg Alt 32.5 m
Max Alt 37.5 m	Max Alt
Min Alt 7.9 m	Min Alt
Climb Rate 9.0 mpm	Avg Climb Rate 4.5 mpm



Some examples of various parameter displays. Use the screen designer to change a parameter or the size, color, look (transparent / translucent) etc.

The Compass parameter can be sized to suit. (up to full screen size) using the screen designer.

● **Speed Monitor (plays sounds (wav files) when set speeds exceeded).**

If selected, the speed monitor will play wav files when the speed thresholds are crossed. If the wav files are not found the standard beeps are used.

- Min Speed - played when the speed goes below the specified minimum speed.
- Set Speed - played when your speed goes above the specified set speed.
- Max Speed - played when your speed goes above the specified max speed.

The three speeds can be activated independently of each other.

● **Find Maps at cursor position**

Map search routines are built-in, simply press the "Find Map at Cursor" option and OziExplorerCE will scan the folder where the current Map was loaded from and configurable Map File Paths and find all the maps which will have the current cursor position contained within them.

During real time tracking, these paths are automatically searched for maps.

● **Uses and writes files in the same formats as the full PC based OziExplorer**

Data files are in the same format so files saved in OziExplorerCE can be loaded into the PC based OziExplorer.

● **Name Search**

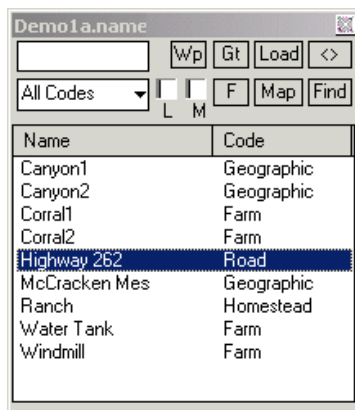
The PC OziExplorer and OziExplorerCE name search databases are identical and databases created for PC OziExplorer can be used.

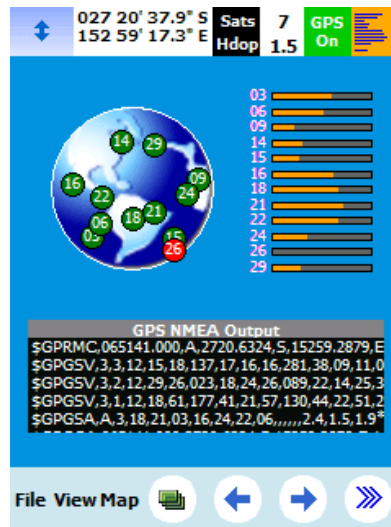
A utility is provided so you can make your own databases for most countries from data which is available from the internet.

● **Satellite View and NMEA Data**

One of the screens available is the Satellite View. If your GPS is connected and outputs the GSV NMEA sentences, a graphical display will show the satellites your GPS has connected with.

To assist you to check the NMEA output from the GPS, another parameter is provided to view the NMEA sentences being received from the GPS.





Map View

Map View is a small window on top of the main map window which displays the full map. Features of the Map View are -

- The Map View can be turned on/off from the View Menu or by pressing the Map View button on the Main Toolbar.
- Clicking on the Map View map will scroll the main map to the same position.
- Click on the colored border around the map to display a list of the available maps at that position.
- The Map View window can be resized to suit your requirements.
- Waypoints, Map Features and Map Comments can be displayed on the Map View window.



Small map view window showing the full map which can overlay the main map window.

Nearest Waypoint List

When navigating, the nearest Waypoint List shows the waypoints that you are getting closer to in green and the waypoints you are going away from in white. The waypoint being navigated to is highlighted red.

Nearest Waypoint List		
Distance	Bq	Name
999 m	0	WP5
1.01 km	180	WP6
1.13 km	124	1
5.86 km	313	WP3
11.9 km	95	WP1
12.1 km	95	WP0
12.2 km	95	WP2
3422 km	247	AlbanyQu

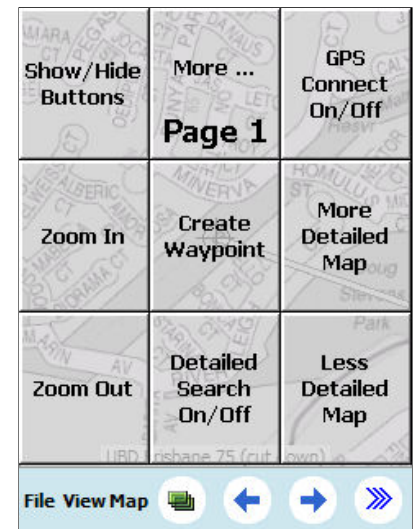
Screen Control

A special feature available in OziExplorerCE is "Screen Control".

So it is easier for the operator to control the software in a tricky environment the screen itself (the map area) has been divided into a grid of 9 zones on 1 or more pages, each zone acts as a button which can be pressed by the finger for instant action.

The top left button will show / hide the overlay shown in the picture to help you see the zones and the operations they perform.

For example : if you want to place a waypoint on the map at the current position, simply press the centre of the screen.



● Log Book

A fully configurable logbook function can automatically log position, date/time, and other parameters when the configured conditions such as elapsed time, distance, heading and speed change are met. A snapshot of a small portion of the map can also be taken and added to the log entry. Manual Log Book entries can be made.

Note : OziExplorer cannot upload maps to any mapping GPS. These require special maps and software which is usually only provided by the GPS manufacturer.

[[Home](#)] [[OziExplorer](#)] [[OziExplorerCE](#)] [[OziExplorer3D](#)] [[Purchasing](#)] [[Maps](#)] [[Utilities](#)] [[Support](#)] [[Links](#)] [[Future Changes](#)] [[Information](#)] [[Australian Page](#)] [[Site Map](#)]